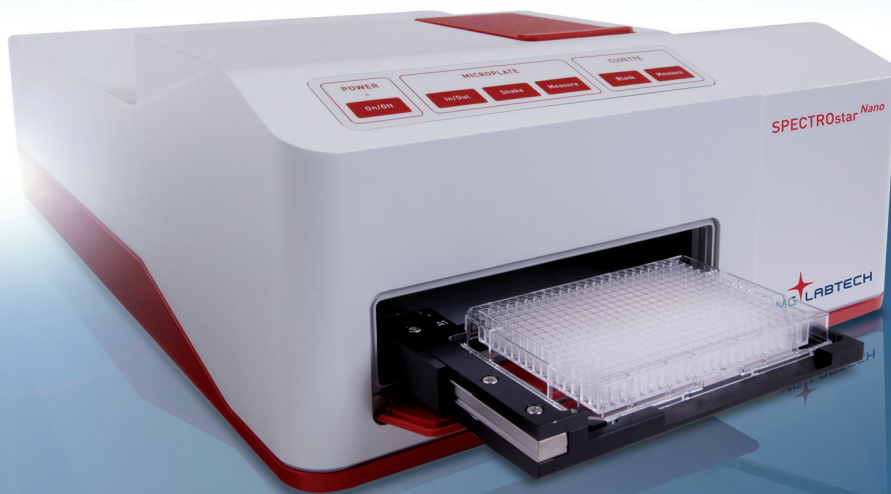


SPECTROstar^{Nano}

Ultra-fast Absorbance Spectrometer for Microplates and Cuvettes



**BMG LABTECH**

The Microplate Reader Company



Innovative Absorbance Microplate Reader with Cuvette Port

Fast determination of
DNA, RNA, ELISA, and more.

The SPECTROstar *Nano* represents the next evolution in absorbance microplate reader technology.

Equipped with BMG LABTECH's proprietary ultra-fast UV/Vis spectrometer, the SPECTROstar *Nano* can capture full spectrum absorbance readings (220 - 1000 nm) in less than 1 second per well in microplates, cuvettes, and low volume samples.

Unique Technology and New Features

Backed by German engineering and technology, the SPECTROstar *Nano* is a versatile, automated absorbance reader for microplates, cuvettes, and low volume samples. New features and unique technology on the SPECTROstar *Nano* include:

- Ultra-fast UV/Vis Spectrometer
- Measures all microplate formats up to 1536-wells
- Standard cuvette port for individual samples
- Low-volume samples with BMG LABTECH's LVis Plate (2 μ L)
- Multimode shaking - linear, orbital and double orbital
- Incubation up to 45°C
- Gas Vent
- Robotic compliant software interface
- Powerful MARS Data Analysis Software

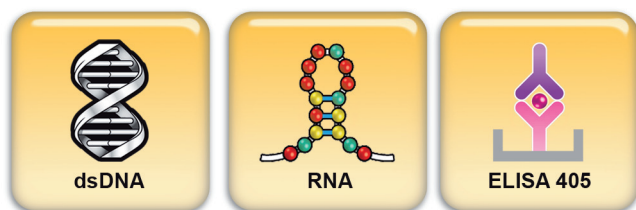
Other features on the SPECTROstar *Nano* include: automated path length correction, well scanning, kinetic readings, assay-specific buttons, and predefined calculation templates for data analysis.

Perfect for all Absorbance Assays

The SPECTROstar *Nano* is the ideal instrument to read all absorbance assays in a microplate or cuvette. Its rapid full spectrum analysis allows for absorbance assays never before possible on a microplate reader. The most common absorbance assays such as ELISAs, DNA, RNA, protein (Bradford, BCA, Lowry), and beta-galactosidase have predefined quick run assay-specific protocols and buttons. More complex or user specific assays are programmable.

Assay-Specific Buttons

The Control and MARS Data Analysis Software have predefined assay specific protocols. This user-friendly feature enables researchers to do experiments with the SPECTROstar *Nano* in a snap. Measurement and analysis are performed with a single mouse click, and the user can assign a new test run or data analysis to a specific assay button.



Predefined assay-specific buttons for one-click measurements

UV/Vis Spectrometer

The SPECTROstar *Nano* is equipped with BMG LABTECH's proprietary UV/Vis spectrometer. This spectrometer instantaneously captures full absorbance spectra from 220 - 1000 nm at resolutions of 1 - 10 nm.

Full absorbance spectra can be measured in less than one second per well, which is significantly faster than any conventional method. Alternatively, partial spectra or up to eight wavelengths can be measured simultaneously.

The spectrometer incorporates a highly efficient optical grating and a solid state array detector that allows the measurement of light intensity throughout the UV and visible parts of the spectrum. Similar to a monochromator, but much faster, the spectrometer can capture the entire UV/Vis spectrum of a sample within a second – no scanning needed.



...from a single spectrum per well to spectra overlay plots.

Standard Cuvette Port

More than just a microplate reader, the SPECTROstar *Nano* has a standard cuvette port for single sample absorbance measurements. With several other special cuvettes available, a range of sample sizes (0.3 μ L to 5 mL) can be easily measured. Cuvette based kinetic assays will be reinvented when using the SPECTROstar *Nano*. Full spectrum data can be collected in a second, allowing for polychromatic evaluation over the whole UV to visible spectrum.

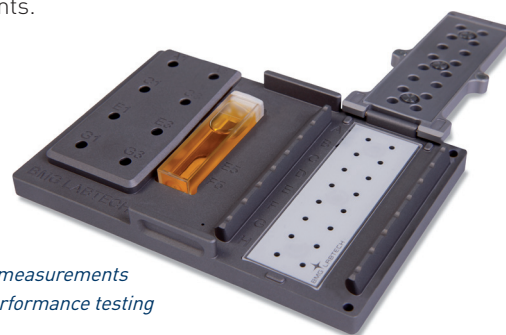
The cuvette port door can be kept open when measuring, which is ideal for a flow-through cell. This advantage also allows readings to be taken before, during and after manual addition of reagents.



Cuvette Port for Standard and Micro Cuvettes

LVis Plate

When quantitating DNA or RNA, using the least amount of sample is always preferable. With the LVis Plate, BMG LABTECH's low volume microplate, sixteen individual samples of 2 μ L can be measured. The LVis Plate contains a tip rest for easy sample loading when using an eight channel pipettor. The LVis Plate also contains NIST traceable optical density filters and a holmium oxide filter for instrument quality control and performance testing. In addition, a horizontal cuvette position can hold standard rectangular cuvettes for kinetic studies or quick experiments.



LVis Plate for low volume (2 μ L) measurements and instrument performance testing

Incubation, Shaking and Gas Vent

The SPECTROstar *Nano* has incubation, multimode shaking capabilities, and a gas vent. Since all cell-based assays require the correct environment to be properly measured, the gas vent can be used to purge the microplate chamber with different gases. Inert gases such as nitrogen can be used to measure growth in anaerobic conditions, or a mixture of O₂/CO₂ can be used to measure mammalian tissue cells. The built-in incubator evenly heats the microplate chamber and the cuvette port up to 45°C, thereby allowing the perfect temperature to be used for all cellular growth assays.

The built-in incubator in SPECTROstar *Nano* can also be used for protein denaturation studies by incrementally increasing the temperature followed by full spectrum readings.

Multimode shaking - linear, orbital, and double orbital - permits flexibility when designing assays. Linear shaking allows for the fastest and harshest shaking conditions for cells that tend to clump. Double orbital shaking allows for the slowest and mildest conditions for sensitive cells. While orbital shaking is a cross in between the two.

Endpoint, Kinetics, and Well Scanning

Users can capture an endpoint signal that happens in seconds, or measure the kinetics of bacterial growth over a time period. In well scanning mode, the SPECTROstar *Nano* can easily deal with nonhomogeneous samples such as adherent cells by taking multiple measurements in each well with up to 30 x 30 data points. The MARS software displays each scan point graphically and creates a map for each well.

Automation

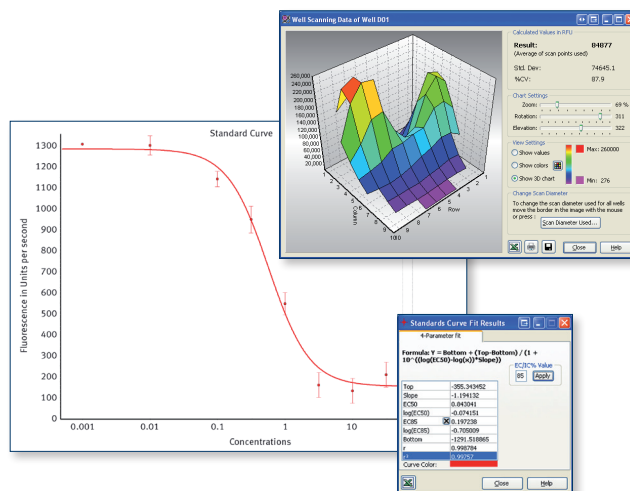
All BMG LABTECH microplate readers have similar x-y dimensions and plate in/out locations. This minimizes the cost of automation solutions for customers. The SPECTROstar *Nano*'s small footprint, automation friendly plate carrier, and multiple robotic software interfaces allow for easy integration into all robotic platforms. Furthermore, having 1536-well capability allows for full spectrum analysis in a high throughput manner.

Control and MARS Data Analysis Software

The SPECTROstar *Nano* software package provides an extensive range of possibilities for both test protocol definitions and data analysis. It is fully compliant with FDA regulation 21 CFR Part 11. The Control part of the software defines instrument parameters and test protocols, and MARS offers various tools for data analysis. Well organized, versatile, easy to use and powerful are just a few of the ways the MARS Data Analysis Software package is described by users. MARS provides several options to display data in a clear and concise format.

Data can be processed with powerful predefined templates or by using an extensive range of data calculation features. Examples include the automatic calculation of enzyme kinetic parameters (V_{max} and K_m) with a variety of fits based on Michaelis-Menten or Lineweaver-Burk equations, or the generation of standard curves based on the following curve fitting algorithms to calculate e.g. EC₅₀, IC₅₀, and r^2 values:

- Linear regression fit
- 4 parameter fit
- Point to point fit
- Segmental regression fit
- Cubic spline fit
- 2nd and 3rd polynomial fit
- Enzyme kinetic (e.g. Michaelis-Menten)



The MARS Data Analysis Software provides sophisticated tools for automated data reduction.

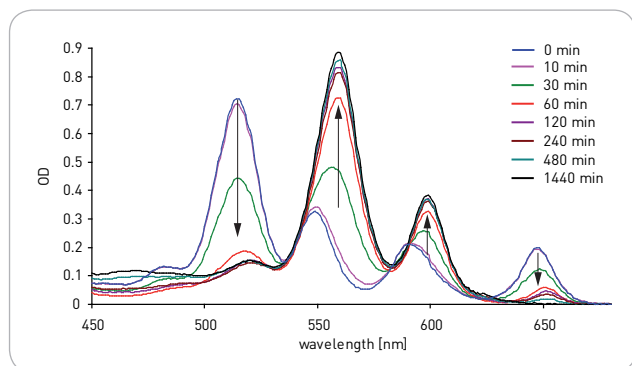
Applications Center

Numerous publications for absorbance measurements such as application notes, posters, and scientific papers exemplify the versatility of the SPECTROstar *Nano*. The following main categories are amongst a wide range of possible applications:

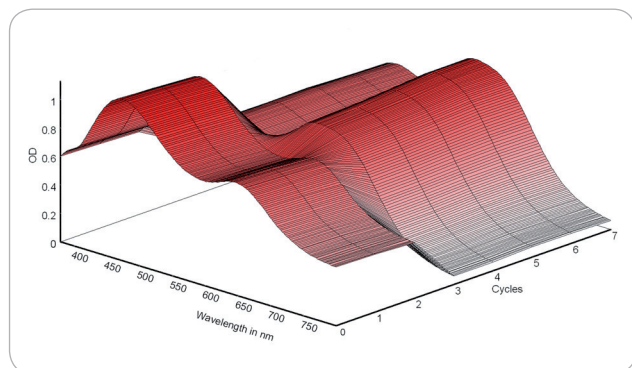
- 260/280 ratio for DNA and RNA
- Protein quantitation
- ELISA
- Cell-based assays
- Enzyme activity assays

The versatility and flexibility of the SPECTROstar *Nano*'s spectrometer are illustrated by the following examples:

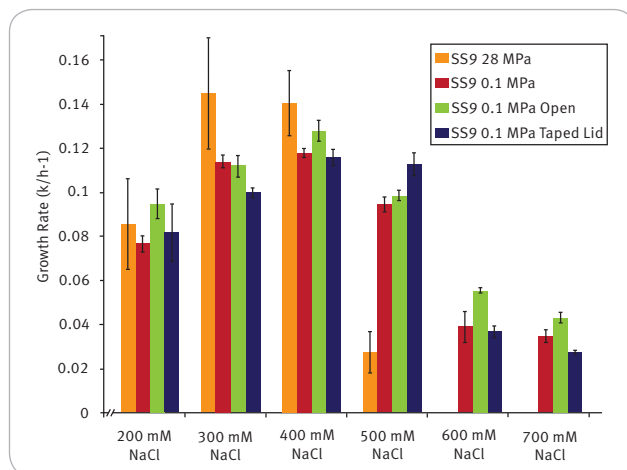
- Kinetic studies on the metallation of porphyrin
- Protein determination with the Bradford assay
- Monitoring of bacterial growth at elevated hydrostatic pressure



Changes in visible spectrum accompanying zinc metallation of TPP. Arrows indicate the evolution of the absorption bands with time.¹



3D well map of a Bradford absorbance spectrum taken over 60 seconds. The 475 nm peak decreases and the 595 nm peak increases.



Measured growth rates of the deep sea bacterium *Photobacterium profundum* SS9, averaged over 33 replicates, for a range of NaCl concentrations at different hydrostatic pressures (MPa)²

BMG LABTECH continuously works with all major reagent companies to develop protocols and to optimize instrument settings for their existing assays and their newest kits. Visit BMG LABTECH's Applications Center online to download all the leading applications, listed as:

- Application notes
- Scientific posters
- Peer-reviewed papers

BMG LABTECH's searchable applications database reflects more than 20 years of expertise expected from a dedicated microplate reader company. Over 2,500 published entries of peer reviewed articles, application notes and scientific papers, exemplify the flexibility and versatility of our readers, and their use in the chemical and biological sciences.

Support and Training

BMG LABTECH operates globally through an extensive network of subsidiaries and well trained distributors. Customers can rely on PhD level support and assistance with regard to software, assay development, or general enquiries related to the SPECTROstar *Nano* and all other BMG LABTECH microplate reading solutions.

^{1, 2} The graphs were taken from BMG LABTECH's Application Notes AN 178 and AN 191.

SPECTROstar Nano - Technical Specifications



Due to the modularity of BMG LABTECH's instruments, all or combinations of the features below can be installed at purchase or upgraded at any time. Please contact your local representative for more details or a quote.

Detection Modes	UV/Vis absorbance spectra
Measurement Modes	Endpoint and kinetic measurements Well scanning
Microplate Formats	6- to 1536-well plates, user-definable
Microplate Carrier	Robot compatible
Cuvette Port	Cuvette port for cuvettes with 10 mm path length Micro cuvettes, Traycell compatible Beam height 8.5 mm
Light Source	High energy xenon flashlamp
Detector	Spectrometer with CCD
Spectral Range	220 - 1000 nm
Sensitivity	Selectable spectral resolution: 1, 2, 5, 10 nm OD range: 0 to 4 OD Accuracy: < 1% at 2 OD Precision: < 0.5% at 1 OD and < 0.8% at 2 OD
Read Times	Full spectrum from 220 to 1000 nm in less than 1 sec/well
Shaking	Linear, orbital, and double-orbital User-definable time and speed
Incubation	+3°C above ambient up to 45°C for microplate and cuvette
Gas Vent	System to inject an atmosphere or to pull a vacuum into the reader
Software	Multi-user software package including Reader Control and MARS Data Analysis Software, FDA 21 CFR Part 11 compliant
Computer Interface	USB 2.0 compatible to USB 1.1
Dimensions	Width: 36 cm, depth: 50 cm, height: 16 cm Weight: 10 kg
Accessories	
LVis Plate	Microplate designed to measure 16 low volume (2 µL) samples and standard cuvettes. Incorporating NIST filter and holmium oxide standards for instrument performance test. Sensitivity: 2 ng/µL dsDNA
Barcode Reader	External manual barcode reader
THERMOstar	Microplate incubator and shaker

Limit of detection (sensitivity) was calculated according to the IUPAC standard: $3 \times (SD_{blank}) / slope$



Go Green Policy

The SPECTROstar Nano's power supply uses less than 0.5 watts of power when the instrument is in standby mode (Efficiency Level V). With EU RoHS construction standards this instrument complies with the EU Restriction of Hazardous Substances Directive (RoHS) and has the smallest impact on the environment.



Made in Germany

Headquarters

Germany

BMG LABTECH GmbH
Hanns-Martin-Schleyer-Str. 10
77656 Offenburg
Tel. +49 781 96968 -0
Fax +49 781 96968 -67
germany@bmglabtech.com

Australia

BMG LABTECH Pty. Ltd.
2/24 Carbine Way
Mornington, Victoria, 3931
Tel. +61 3 5973 4744
Fax +61 3 5973 4711
australia@bmglabtech.com

France

BMG LABTECH SARL
7, Rue Roland Martin
94500 Champigny s/Marne
Tel. +33 1 48 86 20 20
Fax +33 1 48 86 47 07
france@bmglabtech.com

Japan

BMG LABTECH JAPAN Ltd.
2F TS-1 Building
1-6-2, Shimo-cho
Omiya-ku
330-0844 Saitama City
Tel. +81 48 647 7217
Fax +81 48 647 7218
japan@bmglabtech.com

UK

BMG LABTECH Ltd.
P.O. Box 73
Aylesbury Bucks HP20 2QJ
Tel. +44 1296 336650
Fax +44 1296 336651
uksales@bmglabtech.com

USA

BMG LABTECH Inc.
13000 Weston Parkway
Suite 109
Cary, NC 27513
Tel. +1 877 264 5227
Fax +1 919 678 1640
usa@bmglabtech.com

www.bmglabtech.com