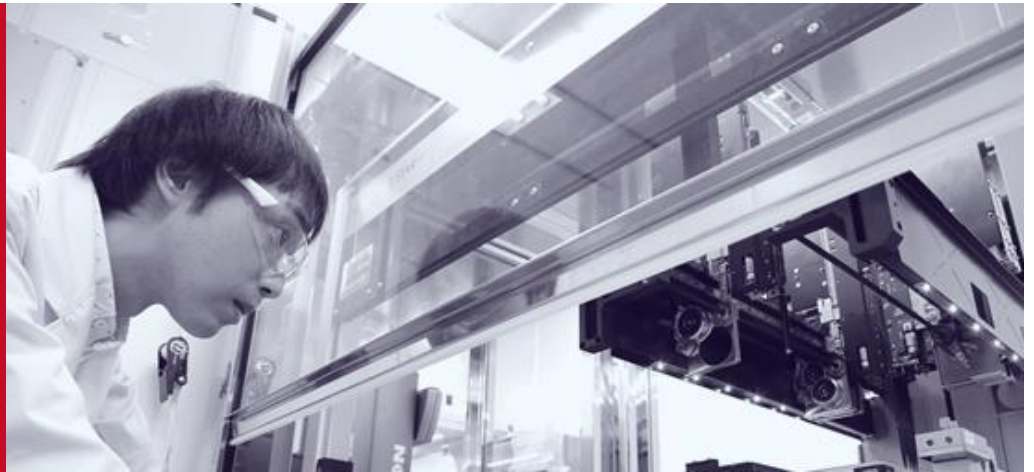


Stable Cell Line Development Service for Biopharmaceutical Production

- High Performance CHO Cell Bank
- High Expression Vector System
- High-throughput Screening Platform



CHO-MK cell performance



High Performance

Large amount of antibody production (**10 g/L**) in **5 days**

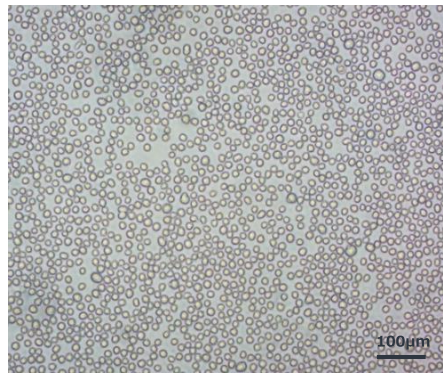


IgG production in fed-batch bioreactor



CHO-MK Host Cell Bank

Applicable for biopharmaceutical production



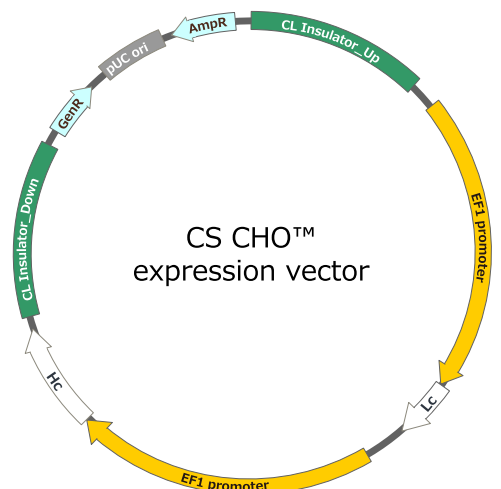
- Conditioned to complete serum-free suspension culture
- Passed viral safety tests
- Completed Host Cell Bank testing package (CoA)



Benefits of CS CHO™ Vector

Chitose Laboratory's original expression vector system

- Signal nucleotide sequences for high expression utility
- Expert in the design of nucleotide sequence for high expression in CHO-MK cell

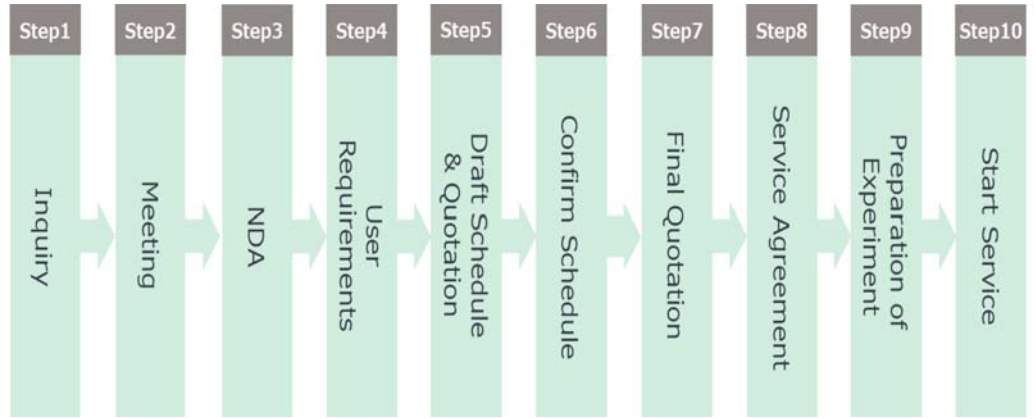


Our service



Business Flow

Contact us for an online meeting and discuss your needs



CLD Platform

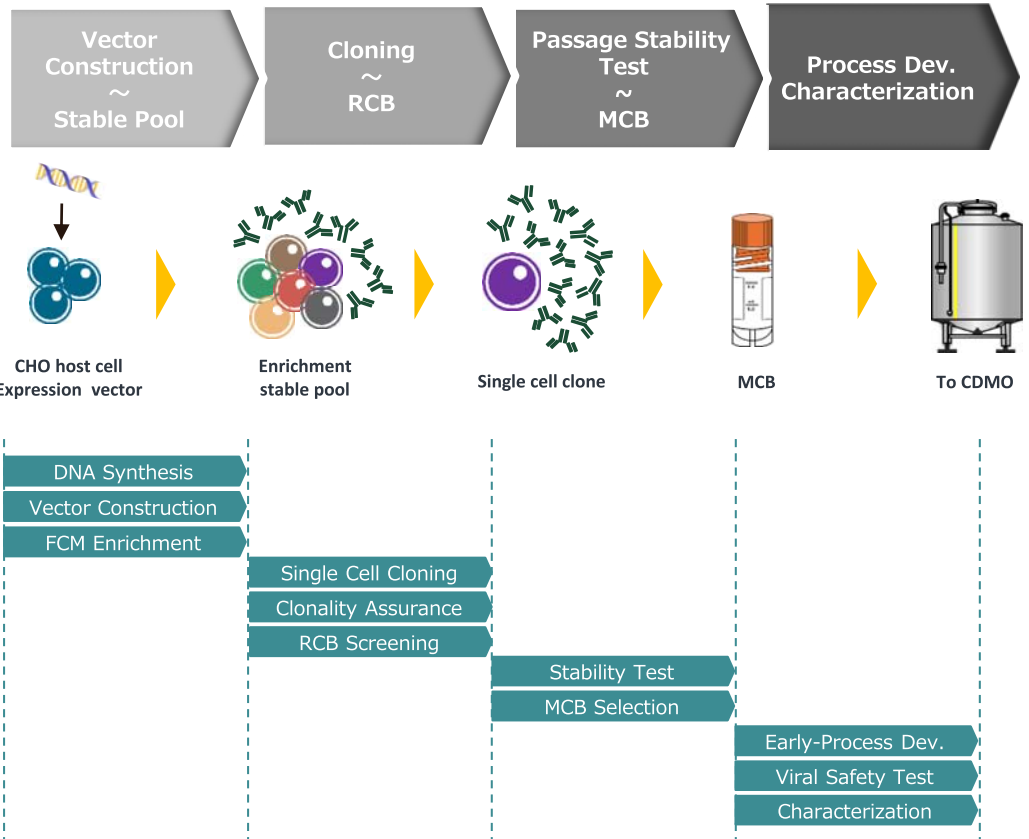
CHO-MK cell and CS CHO™ expression vector system

FCM-based enrichment of high-producing stable pool

High-fidelity cloning by single-cell sorting

Clonality assurance by high resolution imaging system

Early-process development using bioreactor





CHO-MK cells used in this research were developed under the support of AMED (Grant Number JP18ae0101054)

Chitose Laboratory Corp.

KSP East 511, 3-2-1 Sakado, Takatsu-ku, Kawasaki, Kanagawa 213-0012, Japan
Tel.: +81-44-813-3380 | Email: info-cl@chitose-bio.com | Website: <https://chitose-bio.com/cld-service>